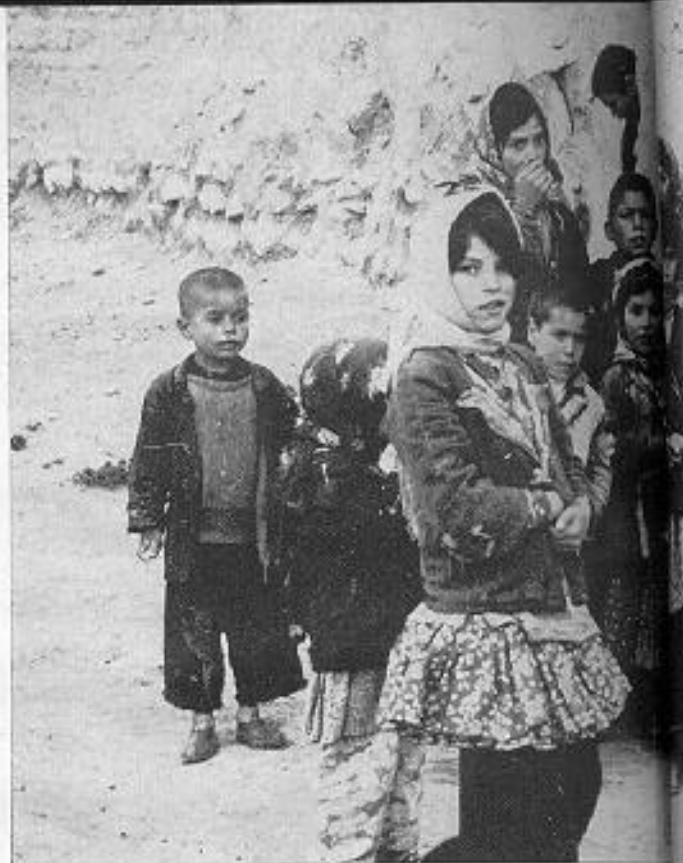


continued

Constant vigilance by health authorities is required to forestall new epidemics

The bacillus was located alive and in plentiful quantities. Continued outbreaks of plague, the scientists report, must therefore be considered inevitable. They now recommend only constant vigilance by health authorities, in order to contain epidemics whenever they do occur.

"The present decline of plague in other areas of the world is an indication not of its final disappearance but merely of the end of the modern pandemic period," says Professor Baltazard. "While man is able to hold the disease in check, it can still erupt overwhelmingly wherever health organizations are weak or upset by a breakdown of the international order that has been so patiently built up in this field." ■



In the field with their equipment, research team members discuss their plan to catch rodents.

Scientist places traps to catch gerbils in study of factors involved in propagation of plague.

